

Bouwplast PVC panels

Hygienic partitioning and
wall panels for modern farming

bouwimpex



Hygienic partitioning and wall panels for modern farming

Bouwplast PVC panels:

- Made of high-quality raw materials
- Extremely smooth surface
- Easy to clean
- Resistant to acids, disinfecting agents and ammonia
- Easy and quick installation
- Flexible system
- Can also be made to measure
- 5 years warranty

Based on years of knowledge and experience with plastics for pig equipment, Bouwimpex has developed the Bouwplast walls and pen separation system for the agricultural sector.

Bouwplast PVC panels and profiles have been on the market for more than 25 years. Both within and outside Europe numerous projects have been carried out, the results of which have proven to be effective, also in the long term.

By using high-quality raw materials, a Bouwplast panel has an extremely smooth surface. This allows for easy cleaning and for considerable hygiene in the barn. The high quality of the material also ensures an exceptionally strong and durable panel with an extensive lifespan. In addition to pig farming, the Bouwplast wall system is increasingly widely used within the agricultural sector, such as within the poultry sector among other areas.

Bouwplast product range

The Bouwplast product range comprises a number of high-quality (clicking) panels and profiles in various sizes and thicknesses. Horizontally, the panels are used for the construction of pen partitions and, vertically, as a complete dividing wall in a barn or agricultural building. The various panels and profiles are commonly used in combination.

Complete and flexible system

The complete and flexible system can easily be used in an existing situation, where the wishes and requirements of the farmer are taken into account, together with most recent developments in barn equipment. The material is easy and quickly to install without loss. Bouwplast is easy to process, saw and drill.

Bouwplast made to measure

Bouwplast panels and profiles can be produced to project size. Bouwimpex provides this service at no extra costs. This means a custom specification, without additional work, left-over & waste and - therefore - more efficient building!





Bouwplast-plus panels

- Unique clicking system (with rubber seal)
- Extremely smooth surface
- Heavy and solid panel (tot 11 kg/m²)
- High-quality coextrusion process
- UV-resistant, so no fading
- Perfectly sealed connection (hygienic)
- Proven system at home and abroad
- Interchangeable with other plus panels
- One system for pens and walls
- Attractively priced

Bouwplast-plus panels

Bouwplast-plus panels are distinguished by its smart clicking system. This is provided as standard from a unique, rubber strip which creates a hygienic, seamless connection. As a result, the panels fit perfectly together to create a smooth, flat wall or partition. By means of this closed connection, and the extremely smooth surface of the panels, there is no chance of dirt adherence.

Technical details

Panel width	250, 400 and 500 mm
Panel thickness	35 mm
Length panel	6000 mm + 7000 mm standard (made to measure projects)
Wall thickness	2,5 mm (+/- 0,2 mm)
Colour	white and grey
Weight	approx. 10,5-11,0 kg/m ²
Tolerance	in accordance with DIN 16942-3A
CO-extrusion layer	0,5-0,7 mm
Material	hard-PVC (Ca-Zn stabilised)





Bouwplast-plus panels

- Unique clicking system (with rubber sealing)
- Extremely smooth surface
- Heavy and solid panel (up to 11 kg/m²)
- High-quality coextrusion process
- UV-resistant, so no fading
- Perfectly sealed connection (hygienic)
- Proven system at home and abroad
- Interchangeable with other plus panels
- One system for pens and walls
- Attractively priced

Bouwplast-plus product range

Bouwplast-plus 250/35

Panel width	250 mm
Panel thickness	35 mm
Length panel	6000 mm + 7000 mm
Wall thickness	2,5 mm
Material	hard-PVC
Colour	white and grey
Weight	approx. 10,5-11,0 kg/m ²

Bouwplast-plus 400/35

Panel width	400 mm
Panel thickness	35 mm
Length panel	6000 mm + 7000 mm
Wall thickness	2,5 mm
Material	hard-PVC
Colour	white and grey
Weight	approx. 10,5-11,0 kg/m ²

Bouwplast-plus 500/35

Panel width	500 mm
Panel thickness	35 mm
Length panel	6000 mm + 7000 mm
Wall thickness	2,5 mm
Material	hard-PVC
Colour	white and grey
Weight	approx. 10,5-11,0 kg/m ²
Extra's	closed flat underside

The Bouwplast-plus panel 500/35 has a closed, flat underside. Ideal as starting panel for pen partitions in the farrowing pen but also for fattening pigs and piglets. Naturally, the top side of the 500/35 panel is fitted with a click connection to EPDM sealing.



Bouwplast-plus 500/35 panel with closed flat underside.



Bouwplast-plus FR panels

- Fire class B-S3-D0 in accordance with and 13501-1: 2007
- High-quality plastic with unique fire-resistant properties
- Available in white and grey

Proven fire-safe

Fire safety in barns is a big issue. Politics and society insist on stricter rules; however, farmers themselves also take protective measures. A barn fire may have serious consequences, both emotionally and financially.

Anyone who looks to the future therefore opts for fire-safe construction. Bouwimpex helps in this with Bouwplast-plus FR (fire-resistant) panels. The FR panel is made of high-quality plastic (PVC) which possesses unique fire-resistant properties.

Ready for a fire-safe future

Plastic walls are faster to install, more flexible also and cheaper than a brick wall. A drawback is that plastic is more sensitive to fire. For this reason in close consultation with the plastics industry, Bouwimpex has developed a unique recipe for a fire-safe panel. This fire-safe version of the Bouwplast-plus panel has been tested and approved (as the first) in fire class B.

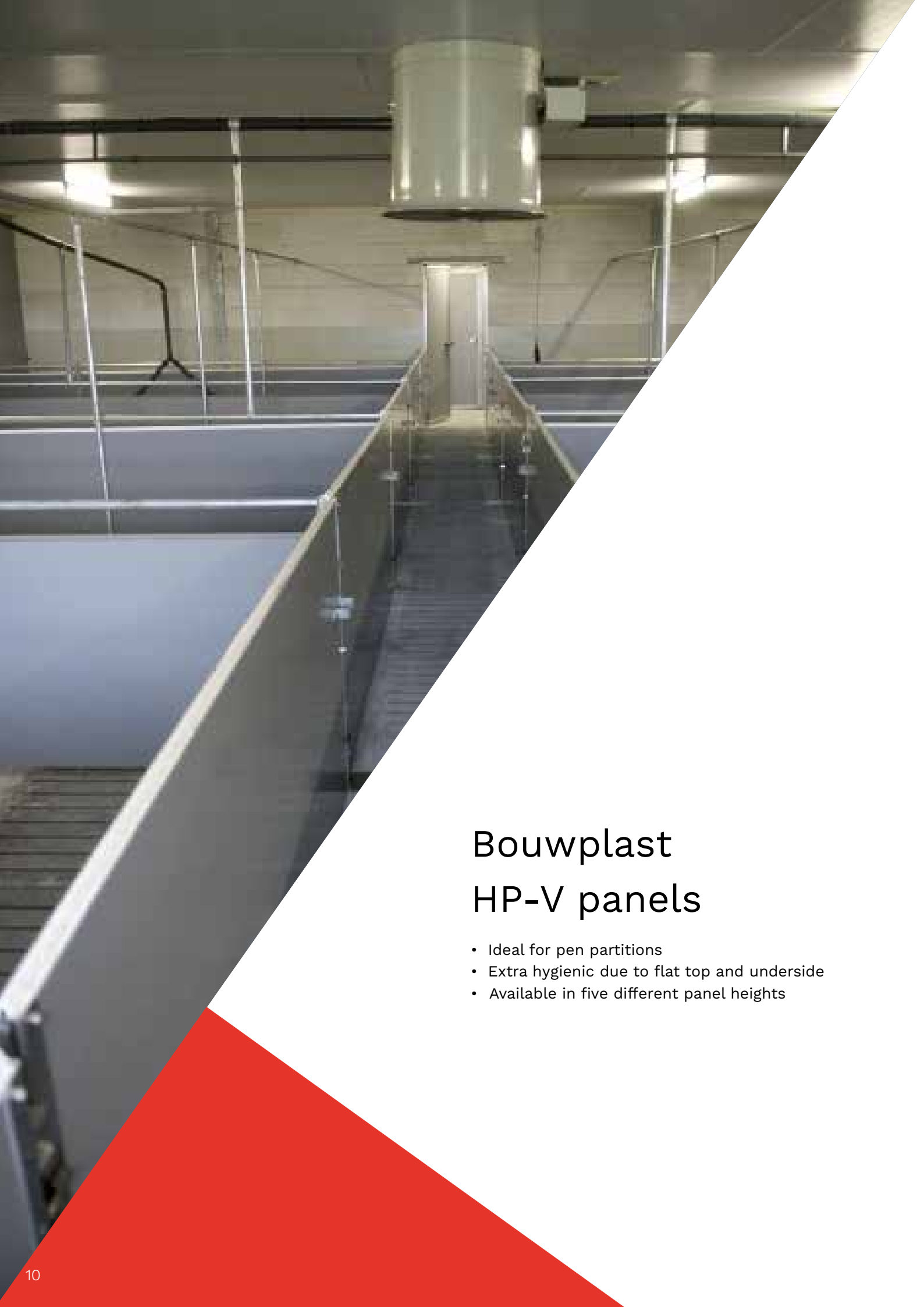
As certified producer, Bouwimpex is happy to help you further to achieve a fire-safe barn.

Technical details

Panel width	250 / 400 / 500* mm
Panel thickness	35 mm
Length panel	6000 mm standard (made to measure projects)
Wall thickness	2,5 mm (+/- 0,2 mm)
Colour	white and grey
Weight	approx. 11,0-11,5 kg/m ²
Tolerances	in accordance with DIN 16942-3A
CO-extrusion layer	0,5-0,7 mm
Material	high-quality fire-resistant PVC
Fire Class	B-S3-D0 in accordance with and 13501-1: 2007

* 500 panel with closed, flat underside, only for pen partitions.





Bouwplast HP-V panels

- Ideal for pen partitions
- Extra hygienic due to flat top and underside
- Available in five different panel heights

Bouwplast HP-V panels are unique in their type and application and ideal for the realisation of pen partitions in barns. These hygienic panels, made from impact-resistant hard PVC are equipped with a flat top and underside. This creates a good seal on the floor and reduces draught to a minimum. This is important for good feed alley ventilation.

The HP-V panel is easy to install and can be supplied in any desired project size. The panels are produced in 500, 600, 750, 850 and 1000 mm height and are therefore ideal for applications in farrowing pens.

Bouwplast HP-V product range: 5 panels, 1 system

The Bouwplast-HP-V product range is available in 5 different panel heights. As a result, typically, all normal pen separation heights can be realised easily and seamlessly.

The panels can be ordered in the desired project size. Fully hygienic finishes are also available, with perfectly fitting covers to neatly finish the ends.

Technical details

Panel width	500, 600, 750, 850 and 1000 mm
Panel thickness	35 mm
Length panel	2,5 mm (+/- 0,2 mm)
Wall thickness	hard PVC
Colour	grey
Weight	approx. 10,0 kg/m ²





Bouwplast-plus transparent panels

- Translucent
- Perfectly sealing connection (hygienic)
- Stable construction
- Easy installation
- Attractively priced
- Can be combined with other Bouwplast-plus panels

The Bouwplast-plus transparent panel ensures that more natural light is realised in the barn, thus having a positive impact on animal wellbeing.

Just like the familiar, the transparent panel is fitted with a sophisticated clicking system. This ensures that the panels fit together perfectly and create a smooth, flat wall. Adhesion of dirt has no chance at all! A combination with other Bouwplast panels is possible.

The standard length of these panels is 6000 and 7000 mm. If preferred, the panels are available in project size.

Technical details

Panel width	300 mm
Panel thickness	35 mm
Length panel	6000/7000 mm standard (made to measure projects)
Wall thickness	2,5 mm (+/- 0,2 mm)
Colour	high-quality transparent plastic
Weight	transparent
Gewicht	approx. 10,0 kg/m ²



A photograph of an industrial facility, likely a water treatment plant, featuring large, curved metal pipes and walkways with railings. The scene is dimly lit with some overhead lights visible. A large, solid red triangular graphic overlay covers the right side of the image, extending from the top right corner towards the bottom left.

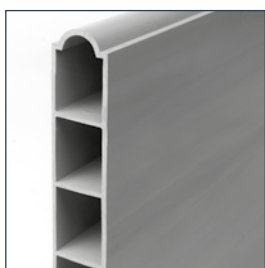
Other Bouwplast product ranges

- Easy to clean
- Extremely smooth surface
- Resistant to ammonia and disinfecting agents
- Easy and quick installation
- Available in various systems
- In white and grey

In addition to plus panels, Bouwimpex offers a product range with alternative panels for various applications in agricultural buildings. These are available with stacking system, sliding system and clicking system. Ideal for creating smooth, hygienic walls and ceilings in barns and creating pen partitions. We will be happy to help you determine which panel is appropriate for your situation.

Panels

Description	System	Length in mm	Width in mm	Thickness in mm	Material	Colour	Weight kg/m ²
BP 200/30	Stapel	6000, 7000	200	30	Hard PVC	White & grey	2,0
BP 200/40	Slide	6000, 7000	200	40	Hard PVC	White & grey	2,5
BP 300/35	Click	6000, 7000	300	35	Hard PVC	White & grey	2,6
BP 500/50	Click	6000, 7000	500	50	Hard PVC	White & grey	5,0



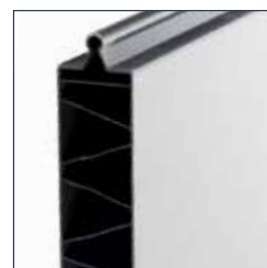
Panel BP 200/30



Panel BP 200/40



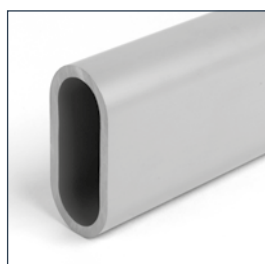
Panel BP 300/35



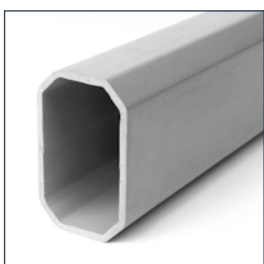
Panel BP 500/50

Profiles

Description	Length in mm	Width in mm	Height in mm	Thickness in mm	Material	Colour	Weight kg/m
Profile BP 70/35	6000, 7000	35	70	5	Hard PVC	Grey	1,4
Profile BP 70/45	6000, 7000	45	70	4	Hard PVC	Grey	1,3
Profile BP-V 70/50	6000, 7000	50	75	4	Hard PVC	Grey	1,6
Profile BP 35/35	6000	35	35	4	Hard PVC	Grey	1,2



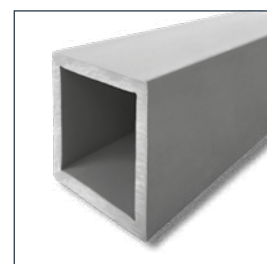
Profile BP 70/35



Profile BP 70/45



Profile BP-V 70/50



Profile BP 35/35



Bouwplast PVC profiles

- Easy to clean
- Extremely smooth surface
- Resistant to ammonia and disinfecting agents
- Simple and quick installation
- Available in various systems
- In white and grey

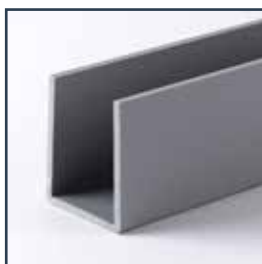
With our PVC profiles, all panels can be neatly finished. These profiles are available in grey and white and can also be produced in a stainless-steel version on request.



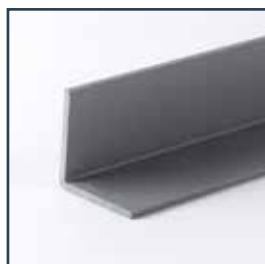
Profile, type U-35



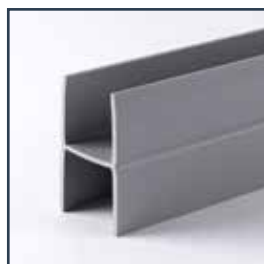
Profile, type Double U-90



Profile, type U-50/35/50



Profile, type L-40



Profile, type H-35



Profile, type H-50/35

Profiles

Description	Length in mm	Width in mm	Thickness in mm	Material	Colour	Weight kg/m
Profile U-35	4000	35	3	Hard PVC	White & grey	0,45
Profile Double U-90	4000	35	3	Hard PVC	White & grey	0,65
Profile U-50/35/50	6000	47/35/47	3	Hard PVC	White & grey	0,60
Profile L-40	4000	40/40	3	Hard PVC	White & grey	0,30
Profile H-35	6000	35	3	Hard PVC	Grey	0,65
Profile H-50/35	4000	50/35	3	Hard PVC	White & grey	0,70

Do you still have questions after reading this brochure?

We will be happy to provide you with more information! Please contact our Sales Department:
+31 (0)342 – 420 233. Or mail to sales@bouwimpex.nl



Bouwplast
panels

View online
Visit our website for
more information and
projects.



Bouwimpex B.V.

Mercuriusweg 15A

3771 NC Barneveld

Telephone: +31 (0)342 420 233

Email address: sales@bouwimpex.nl

www.bouwimpex.nl

